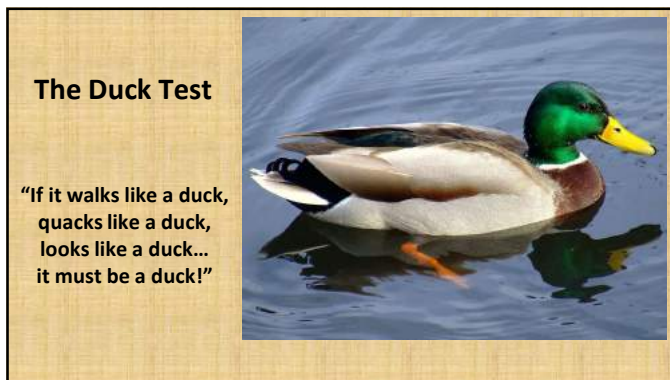




**The Search for Joshua's Ai
at Khirbet el-Maqatir
following the Scientific Method**

- Linguistic data
- Geographical data
- Topographical data
- Archaeological data
- Chronological data



**Linguistic Evidence
Joshua 7-8**

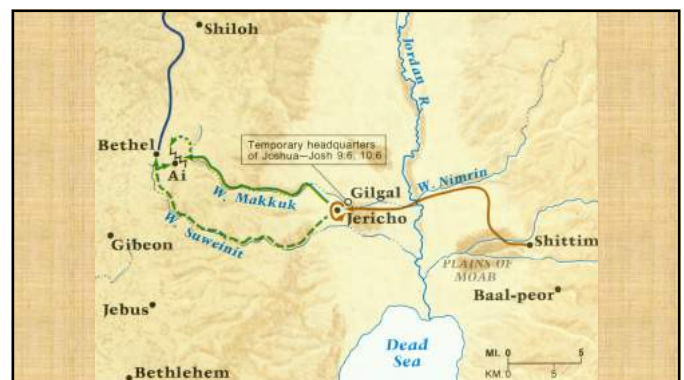
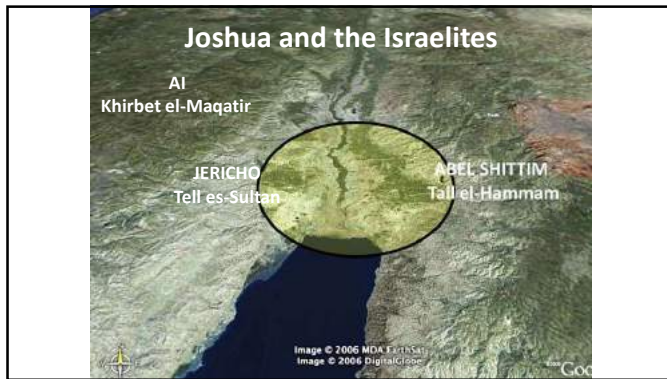
The first and second battles of Ai



Geographical Evidence

From there he [Abraham] went on toward the hills east of Bethel and pitched his tent, with Bethel on the west and Ai on the east (**Genesis 12:8**)

Now Joshua sent men from Jericho to Ai, which is near Beth Aven to the east of Bethel, and told them, "Go up and spy out the region" (**Joshua 7:2**)



Joshua 7-8

- Then Joshua built an altar to the LORD God in Mount Ebal (**Joshua 8:30**)
 - Joshua leads Israel in defeat of Ai (northern border fortress of Jerusalem's Bronze Age City State)
 - Afterwards, Joshua leads Israel to conduct a religious ceremony at Mt Ebal – adjacent to Shechem, capital of its own Bronze Age City State

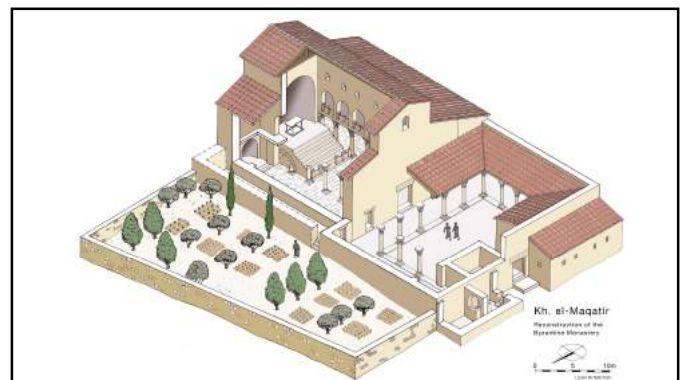
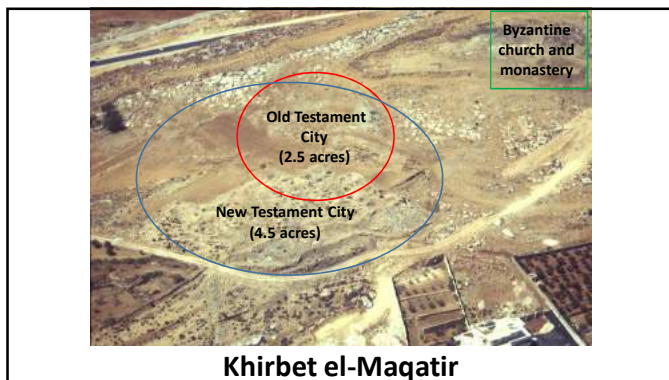
Topographical Evidence Joshua 8:11-13

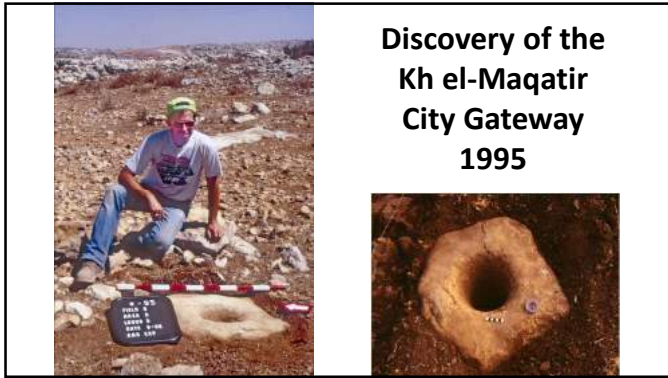
11 The entire force that was with him marched up and approached the city and arrived **in front of it**. They **set up camp north of Ai**, with **the valley between them and the city**. **12** Joshua had taken about five thousand men and set them in **ambush between Bethel and Ai**, to the west of the city. **13** They had the soldiers take up their positions—all those **in the camp to the north of the city** and **the ambush to the west of it**. That night Joshua went **into the valley**.

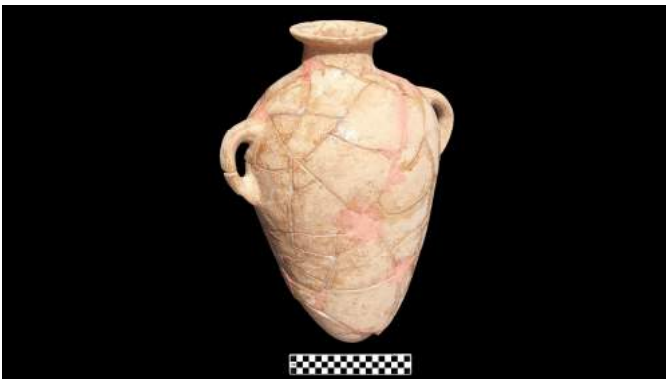
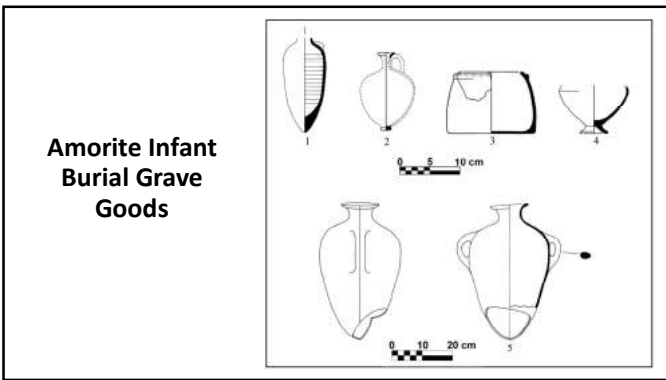


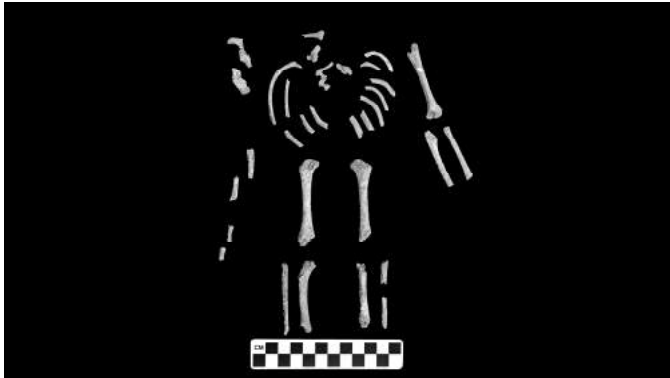
Archaeological Evidence

- Smaller than Gibeon—10 acres vs. 2.5 acres (Joshua 10:2)
- Fortified (Joshua 7:5; 8:21)
- Gate on north (Joshua 8:11)
- Military activity (Joshua 7:4-5; 8:22)
- Women living in the fortress (Joshua 8:25)
- Burned by fire (Joshua 8:25)









Ash and Debris on Pavement within the Fortress of Ai

So Joshua burned Ai and
made it a heap forever, a
desolation until this day.
(Joshua 8:28)



Chronological Evidence Time of Joshua (1406 BC – LB I)

- Pottery (Late Bronze I – much of it refired)
- 15th century BC scarab



#1 Biblical Archaeology Discovery in 2013 according to *Christianity Today* Magazine 12/31/13

<http://www.christianitytoday.com/ct/2013/december-web-only/biblical-archaeologys-top-ten-discoveries-of-2013.html?paging=off>



Scarab (Latin) = Khepri (Egyptian hieroglyphics)



Khepri
Egyptian god of
the morning sun



15th century BC Pharaoh Amenhotep II Scarab
(2013)



The Duck Test

“If it walks like a duck,
quacks like a duck,
looks like a duck...
it must be a duck!”

‘Archaeology
demonstrated the
historical reliability
of Scripture’



Archaeology helps us Trust the Bible for the Past (History)

If we can Trust the Bible for the Past (History),
Then we can also Trust it for the Future (Eternity)

If we can Trust the Bible for the Past (History)
and the Future (Eternity)...

Then we can then we can also Trust it for the Present
Learning how to Live One Day at a Time